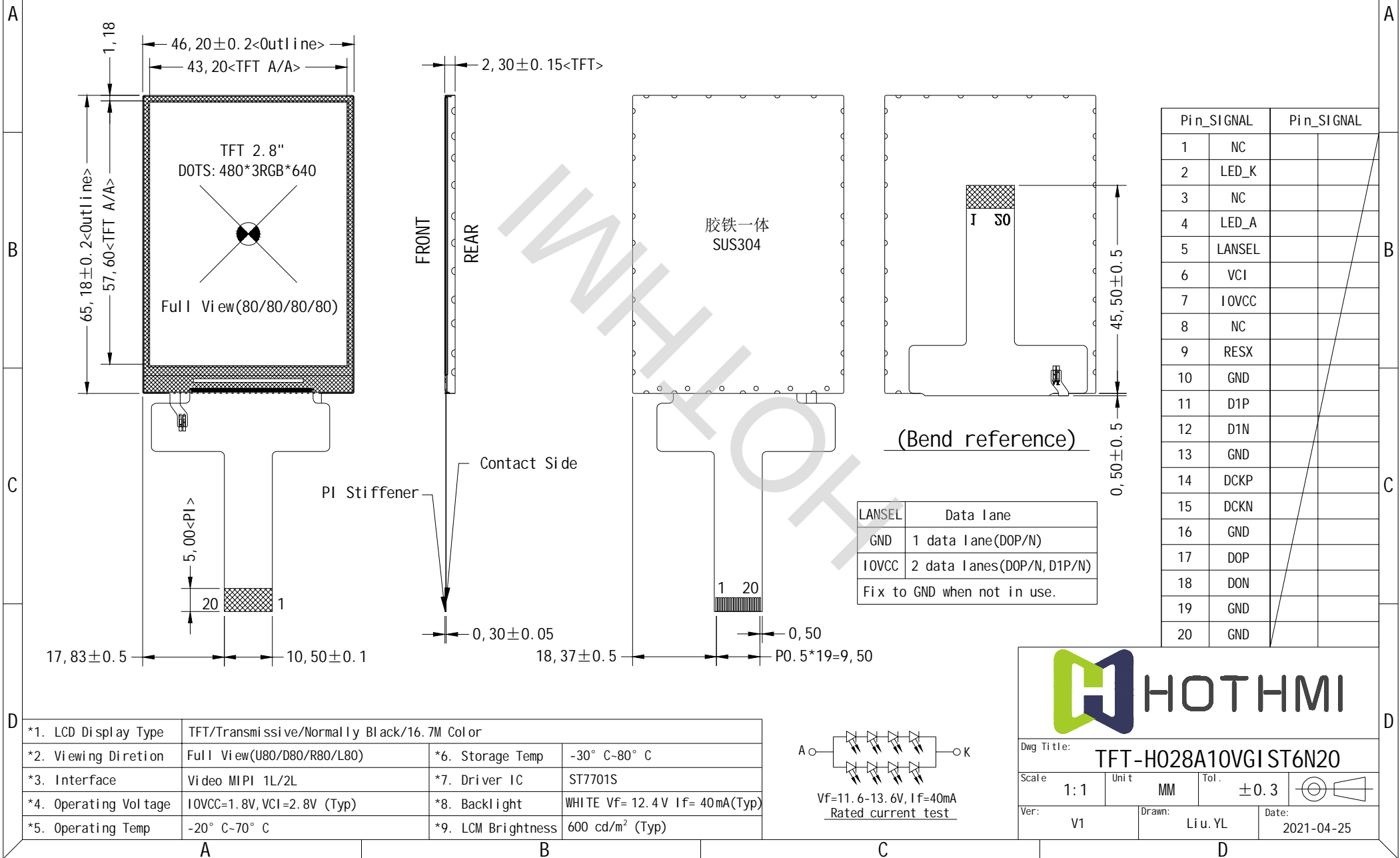


*** Do not display the fixed pattern for a long time when using a normally black panel, as it may cause image sticking due to the LCM structure. If the screen is displayed in fixed mode, use a screen saver. It is recommended to display the fixed mode in less than 2 minutes or less.

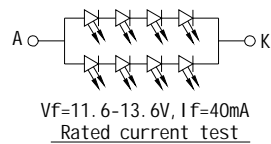


Pin	SIGNAL	Pin	SIGNAL
1	NC	11	D1P
2	LED_K	12	D1N
3	NC	13	GND
4	LED_A	14	DCKP
5	LANSEL	15	DCKN
6	VCI	16	GND
7	IOVCC	17	DOP
8	NC	18	DON
9	RESX	19	GND
10	GND	20	GND

LANSEL	Data lane
GND	1 data lane (DOP/N)
IOVCC	2 data lanes (DOP/N, D1P/N)

Fix to GND when not in use.

*1. LCD Display Type	TFT/Transmissive/Normally Black/16.7M Color		
*2. Viewing Direction	Full View (U80/D80/R80/L80)	*6. Storage Temp	-30° C-80° C
*3. Interface	Video MIPI 1L/2L	*7. Driver IC	ST7701S
*4. Operating Voltage	IOVCC=1.8V, VCI=2.8V (Typ)	*8. Backlight	WHITE Vf=12.4V If=40mA (Typ)
*5. Operating Temp	-20° C-70° C	*9. LCM Brightness	600 cd/m ² (Typ)



HOTHMI

Dwg Title: **TFT-H028A10VGI ST6N20**

Scale: 1:1 Unit: MM Tol: ±0.3

Ver: V1 Drawn: Li u. YL Date: 2021-04-25